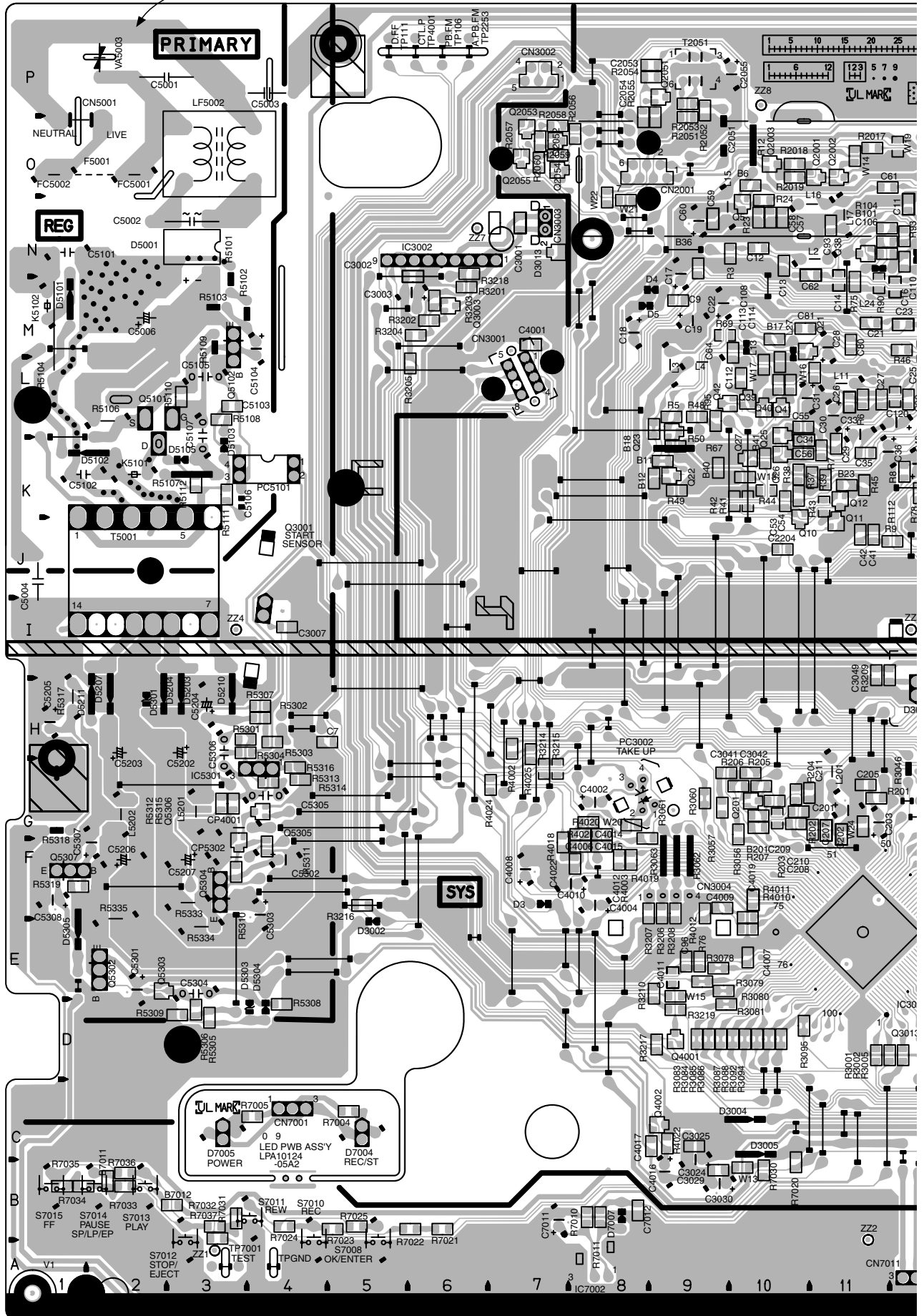
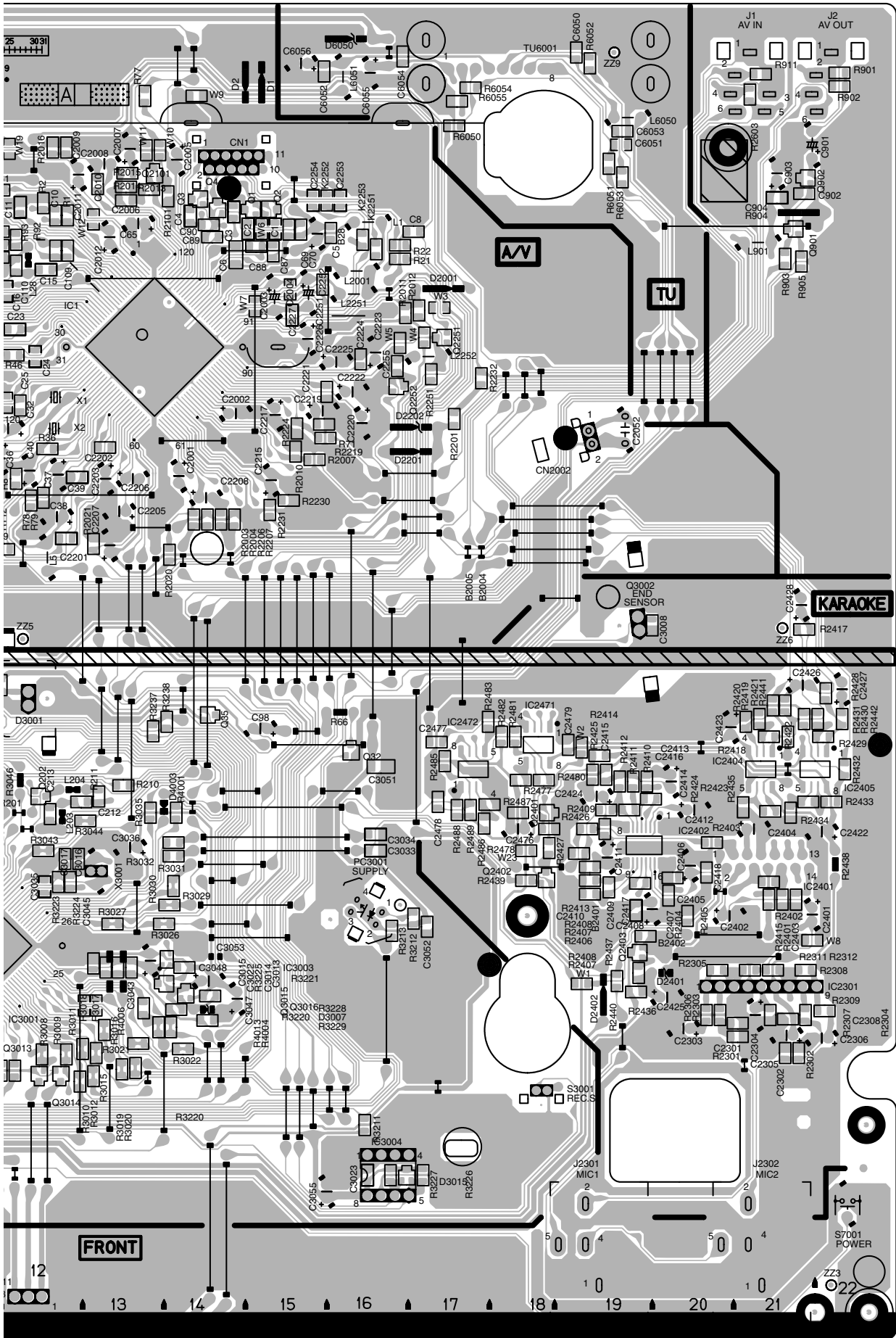


4.1 MAIN AND LED CIRCUIT BOARDS

<03> MAIN, <09> LED
LPB10124-002C

DANGEROUS VOLTAGE





4.2 VIDEO/AUDIO SCHEMATIC DIAGRAM

5

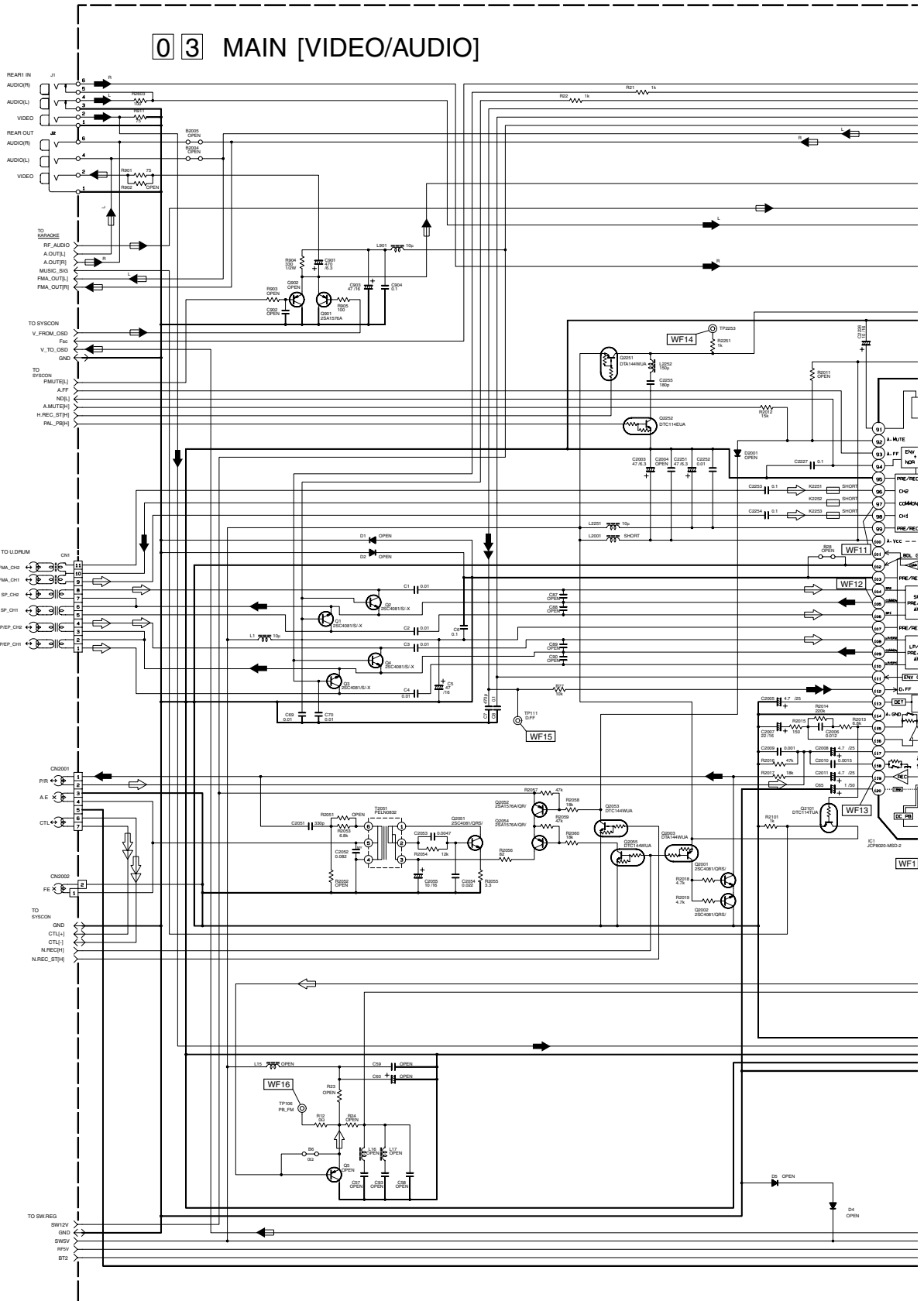
4

3

2

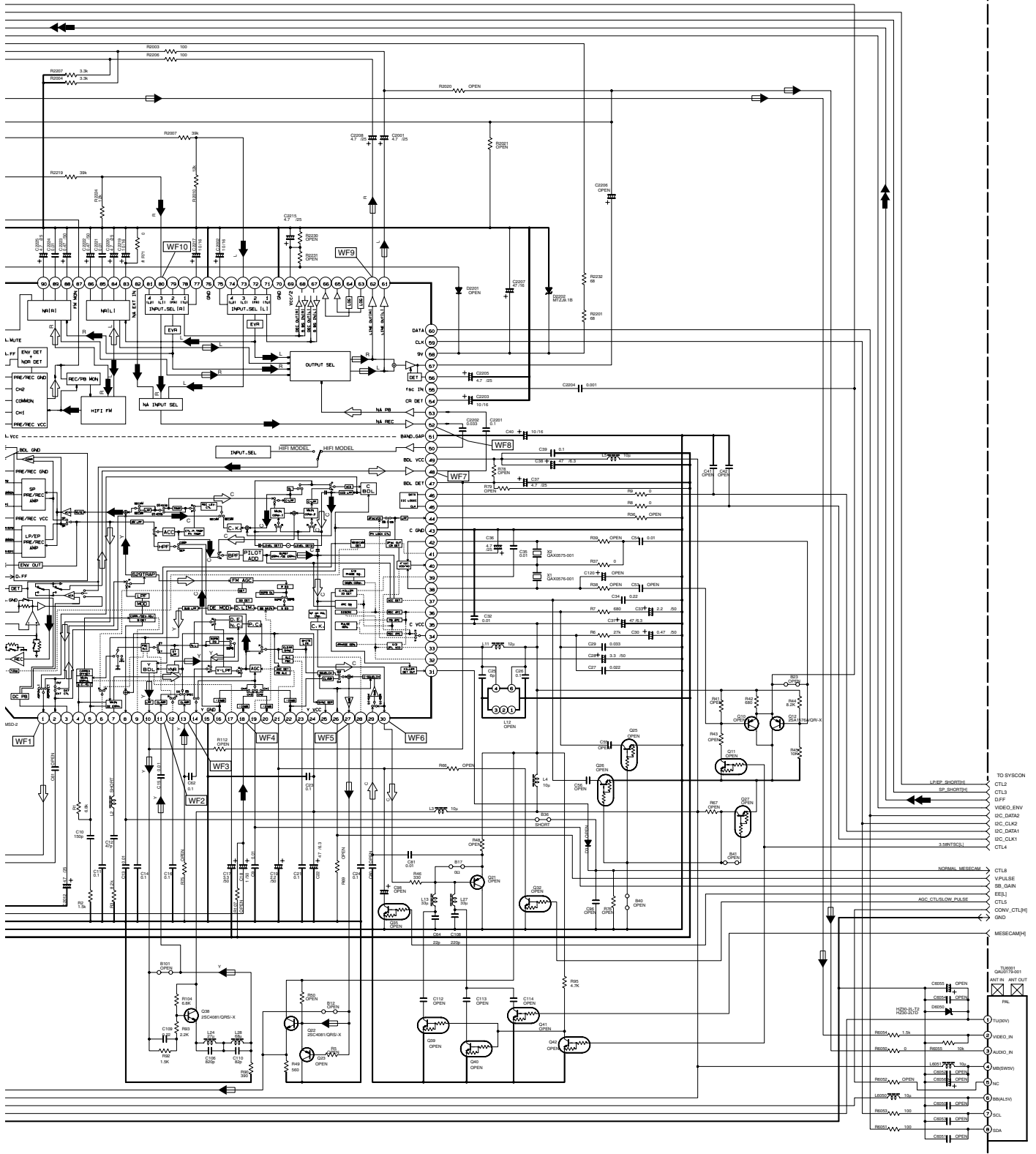
1

03 MAIN [VIDEO/AUDIO]



- Notes:
- How to find the page showing the continuative schematic diagram.
Example) TO SYSCON: Refer to the reference model's service manual.
TO SYSCON: Refer to this service manual.
 - For the waveforms in this schematic diagram, refer to page 4-8.

Note : The Parts Number, value and rated voltage etc. in the Schematic Diagram are for references only. When replacing the parts, refer to the Parts List.



p10298001a_rev1

NOTES-UNLESS OTHERWISE SPECIFIED:
 ALL RESISTANCE VALUES ARE IN OHMS.
 ALL INDUCTANCE VALUES ARE IN H.
 ALL CAPACITANCE VALUES ARE IN μ F.

- ELECTROLYTIC
- CERAMIC
- MYLAR
- NON POLAR

E

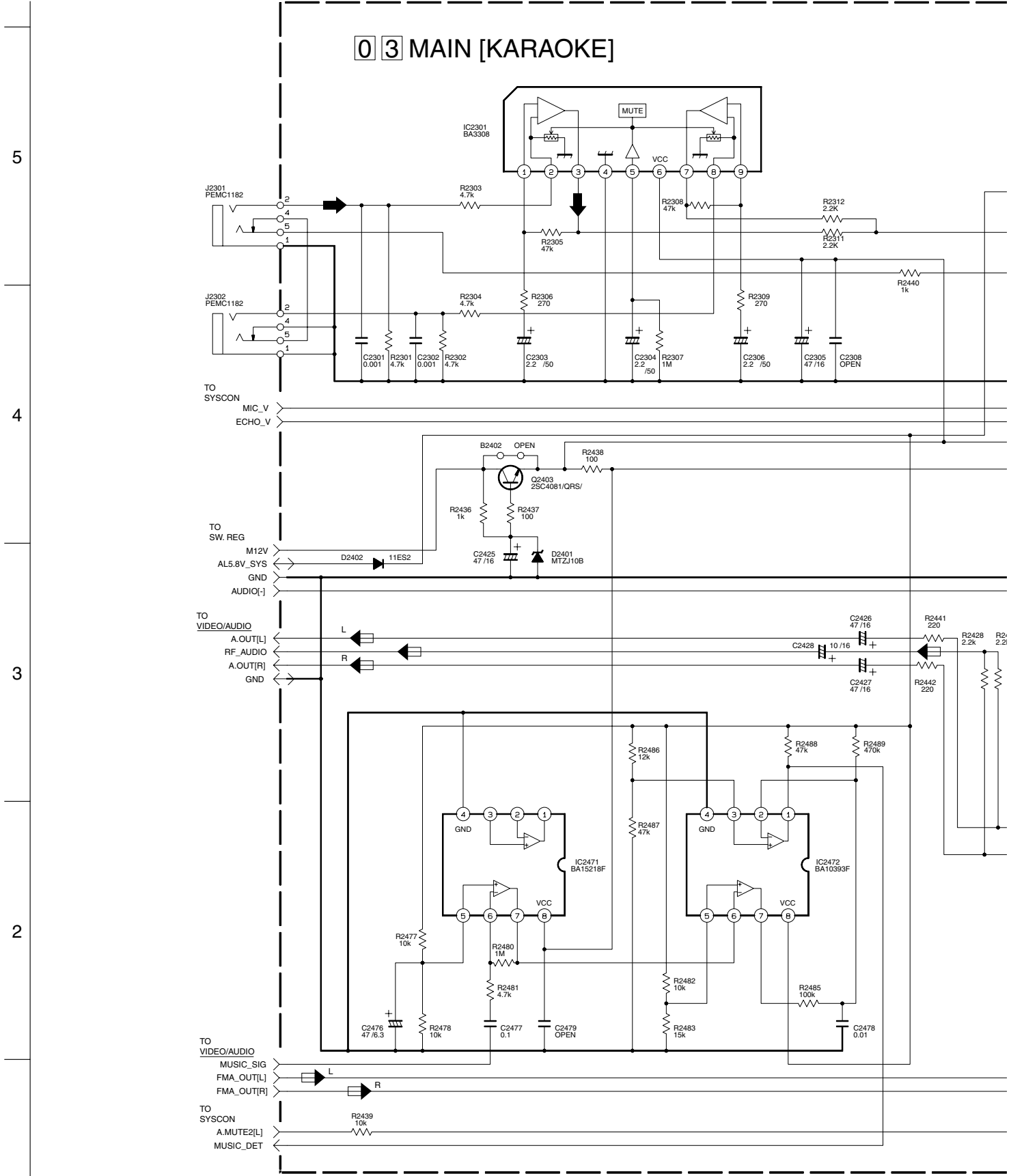
F

G

H

4-5

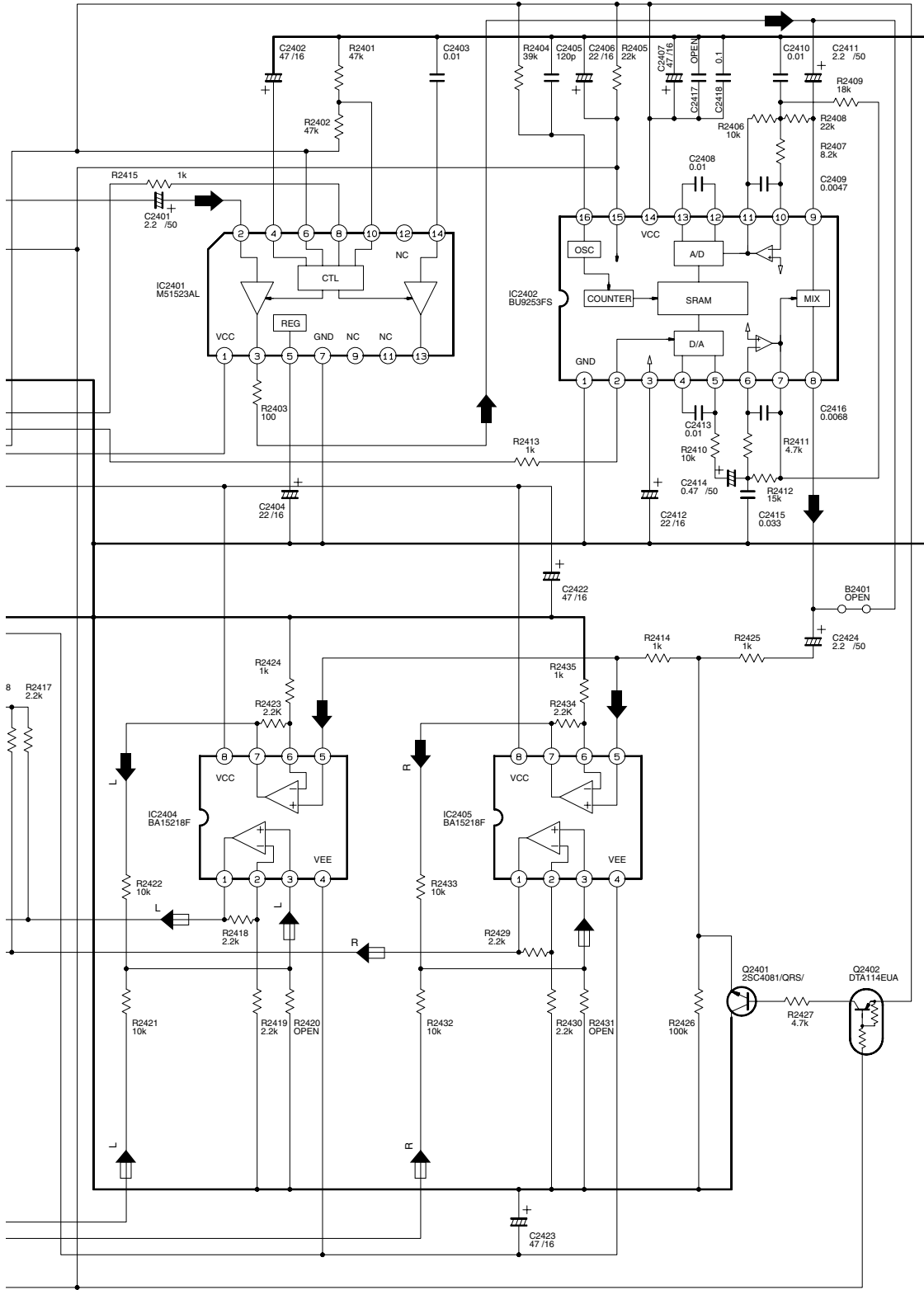
4.3 KARAOKE SCHEMATIC DIAGRAM



NOTES: UNLESS OTHERWISE SPECIFIED.
 ALL RESISTANCE VALUES ARE IN OHMS.
 ALL INDUCTANCE VALUES ARE IN H.
 ALL CAPACITANCE VALUES ARE IN μ F.

- ELECTROLYTIC
- CERAMIC
- MYLER
- NON POLAR

Note : The Parts Number, value and rated voltage etc. in the Schematic Diagram are for references only. When replacing the parts, refer to the Parts List.



p20179001a_rev1

Notes:

- How to find the page showing the continuative schematic diagram.
 Example) TO SYSCON: Refer to the reference model's service manual.
 TO SYSCON: Refer to this service manual.
- For the waveforms in this schematic diagram, refer to page 4-8.

4.4 WAVEFORMS

< VIDEO/AUDIO >

